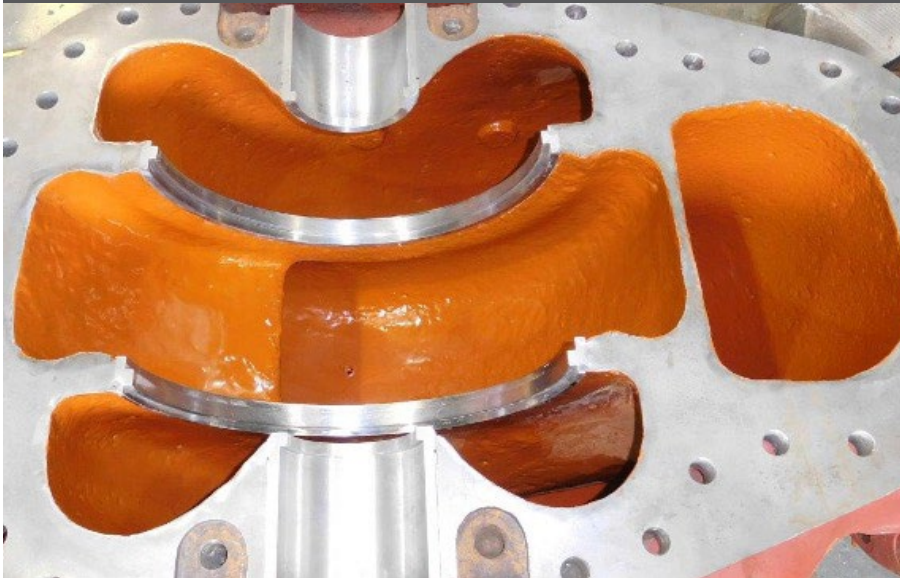


Polymer Steel



INDUSTRIES

- › Chemical Processing
- › Refineries
- › Pulp & Paper
- › Mining
- › Grain Elevators
- › Coal Handling
- › Oil & Gas



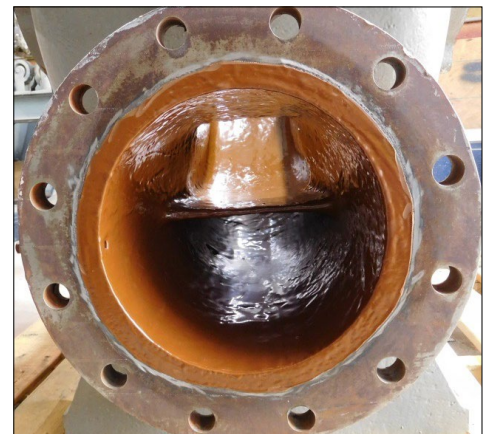
Engineered to repair corroded and worn metallic surfaces efficiently and economically.

PRODUCT	DESCRIPTION
Polymer Steel MG	100% solids, 0 VOC, fine aluminum oxide filled machineable resurfacer
Polymer Steel RG	100% solids, aluminum oxide filled multifunctional epoxy putty with high build capabilities
Polymer Steel EG	Fast setting, 100% solids, aluminum oxide filled putty with high build capabilities
Polymer Steel SG	100% solids, aluminum oxide filled multifunctional epoxy coating –fluid grade
Polymer Carbide	100% solids, ceramic carbide filled multifunctional epoxy putty for severe sliding abrasion, impact and cavitation resistance
Polymer Quartz	Concrete repair grout material

Polymer Steel

PRODUCT	APPLICATION
Polymer Steel MG	For pitted, worn areas that require machining to achieve exacting tolerances
Polymer Steel RG	Used to restore eroded/cavitated areas of metal to original contour
Polymer Steel EG	For applications requiring rapid cure trowelable putty where down time is minimal
Polymer Steel SG	Used to provide both corrosion and erosion protection for degraded steel substrates
Polymer Carbide	Rebuilding of extremely worn metallic surfaces – not machineable
Polymer Quartz	For cementitious repairs requiring extra strength and durability than traditional repair mortars

FEATURE	MG	RG	EG	SG	CARBIDE	QUARTZ
Compressive Strength	15,500 PSI	22,700 PSI	26,000 PSI	20,500 PSI	15,500 PSI	11,000 PSI
Shore D Hardness	91	95-97	95-97	95-97	91	Not tested
Pot Life @ 70°F	40 minutes	30 minutes	12 minutes	40 minutes	40 minutes	20-30 minutes
Dry to Touch	4-6 Hours	4-6 Hours	1 Hour	4-6 Hours	4-6 Hours	24 Hours
Cure to Service	24 Hours	24 Hours	24 Hours	24 Hours	24 Hours	2-3 Days



Dudick is part of Carboline

1818 Miller Parkway
 Streetsboro, Ohio 44241
 1-800-322-1970
 330-562-1970
 Fax: 330-562-7638
 www.dudick.com

The Dudick Difference

Why is the service from Dudick superior to that of other manufacturers?

It's our highly-trained field technicians. Dudick technicians are former applicators with extensive front-line experience working with our products. Quality products, industry leading technical support, all backed by the power of the Carboline brand: that's the Dudick Difference.