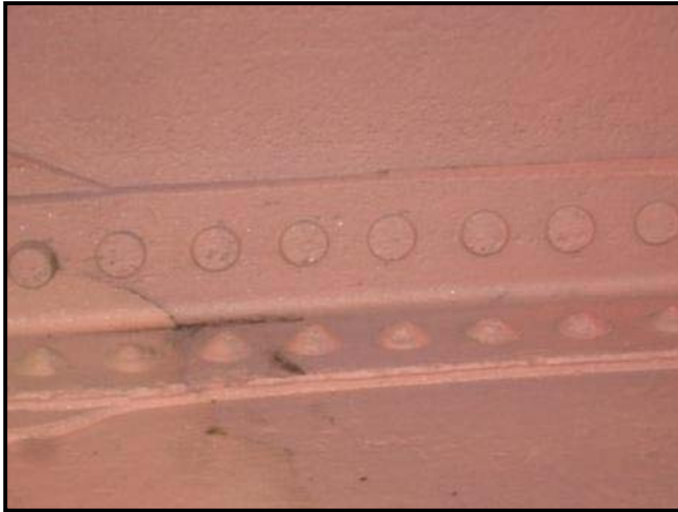


## **Carboguard 695 PM (putty) - Chine Details**

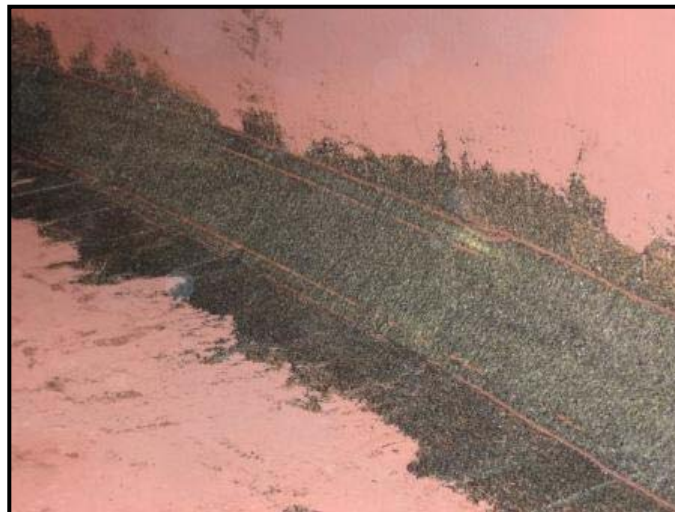
Any lap weld areas, rivets, protrusions, chine areas or other areas requiring a smooth transition shall be treated using a Carboguard 695 PM, a putty or patching material. This material comes as a pre-packaged kit that is mixed at the job site and applied using trowels and/or brushes.



*Chine area requiring chamfer*



*Carboguard 695 PM putty application in chine area*



*Final photo of chamfer detail using  
Carboguard 695 PM putty*

## Fiberglass CSM Application – Chine Area



*Skim coat of epoxy over pitted steel bottom to “ready” the floor for the clear coat and CSM application*



*Saturating fiberglass with Carboguard 695 CLR @30 mils using ½ to ¾ ” roller naps*



*Rolling saturated fiberglass CSM with metal rollers to remove air and install tight to substrate.*



*Completed chine area, prior to floor application*